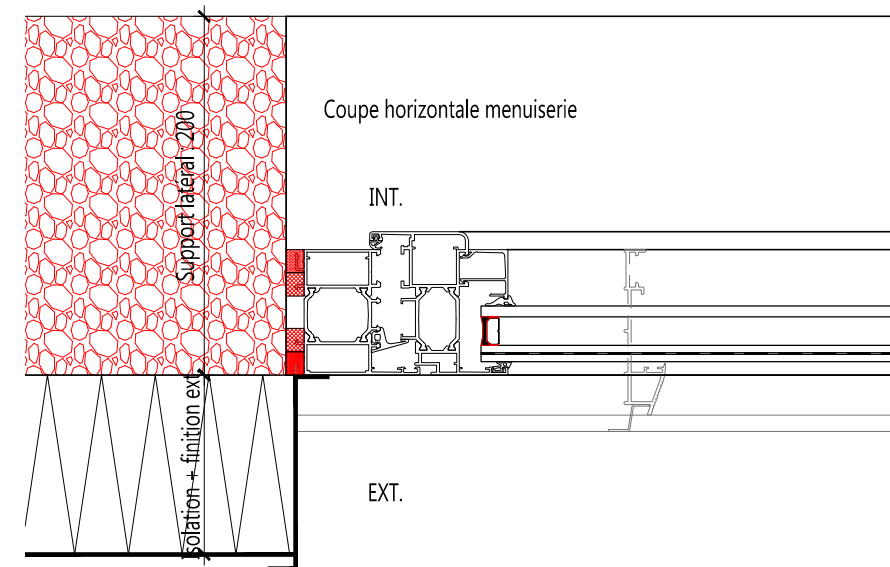
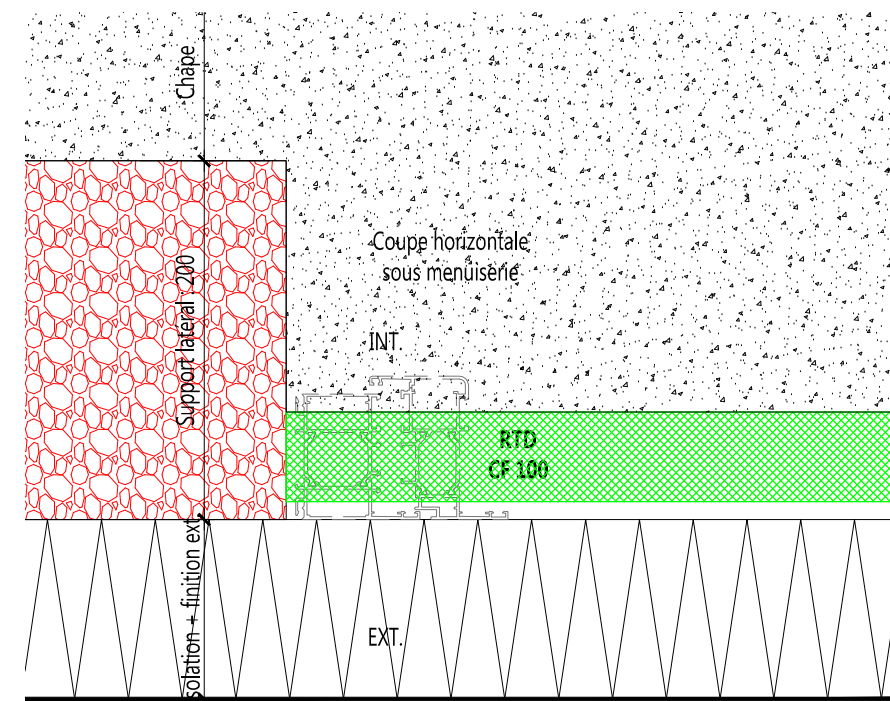
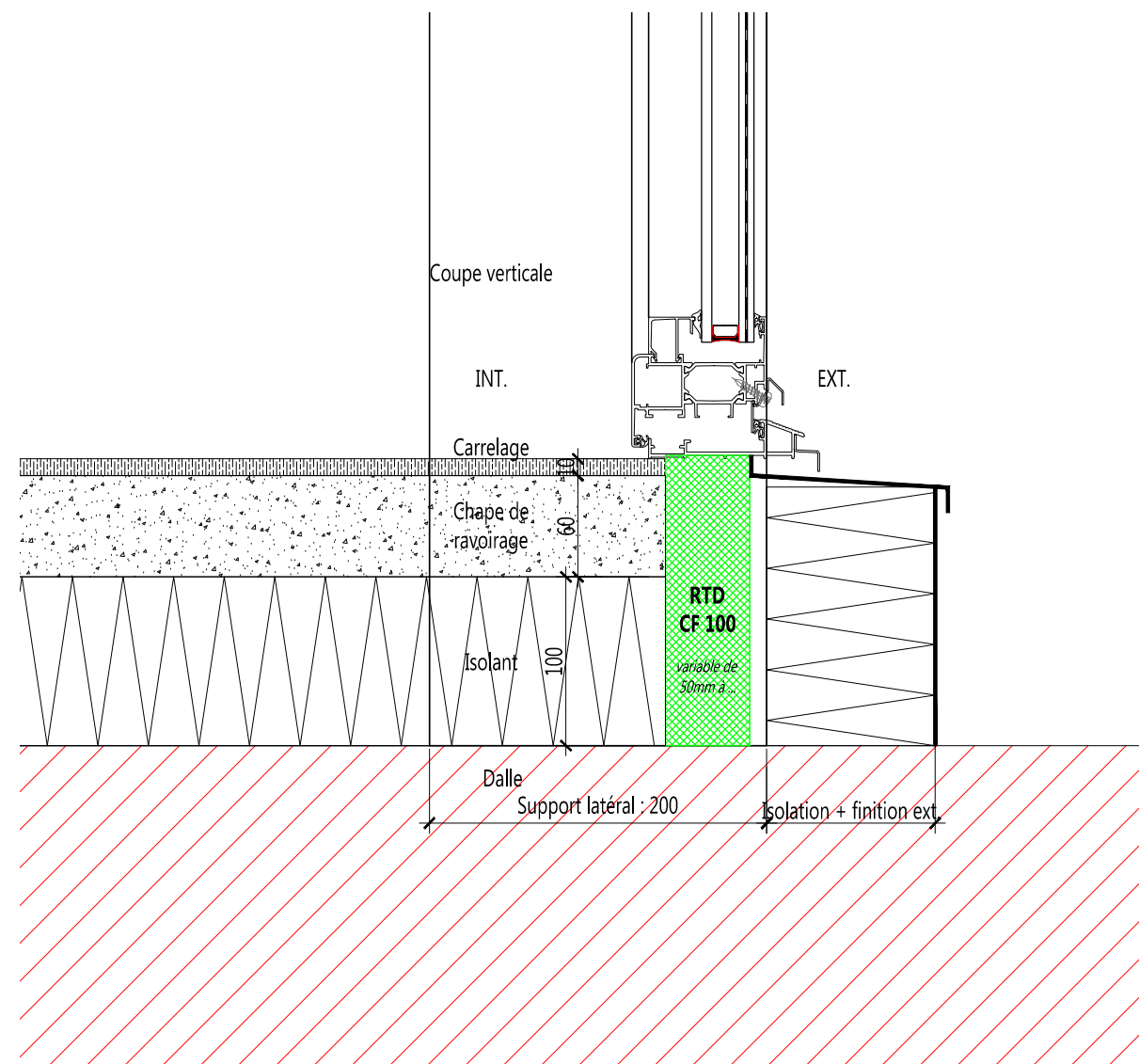


ARKTIC

Isolant
Résistants
Mécaniques

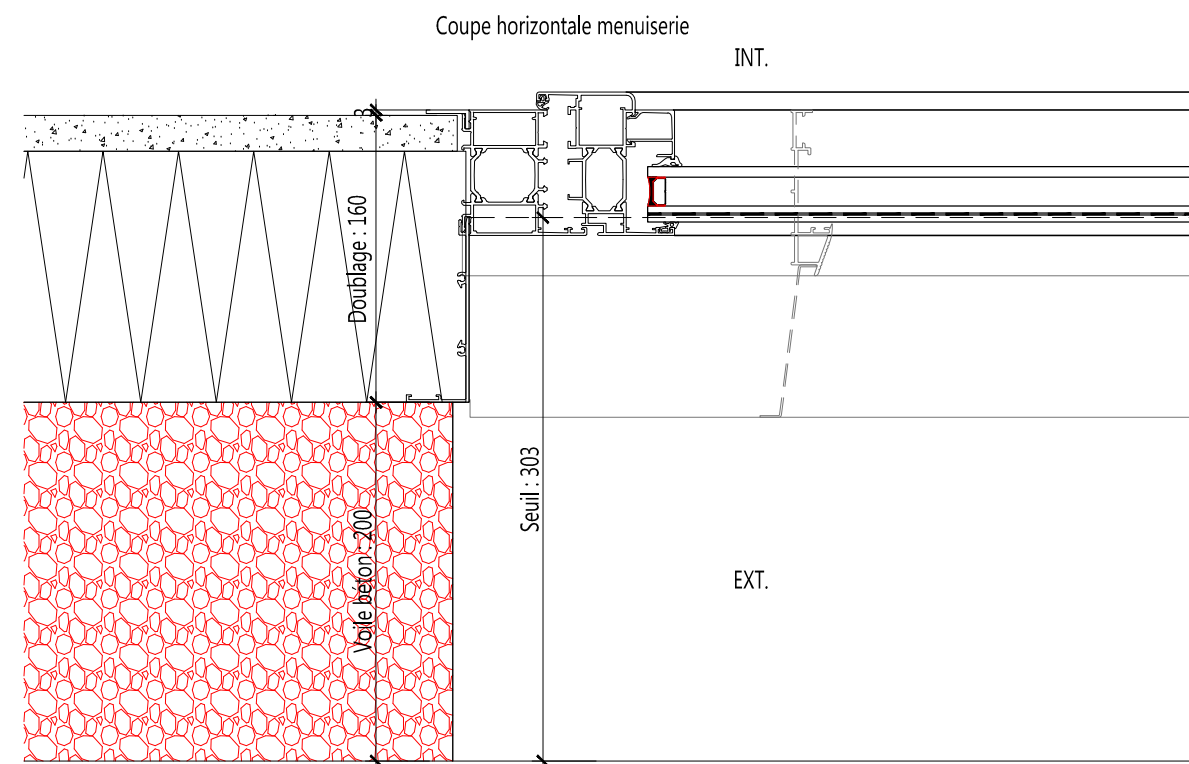
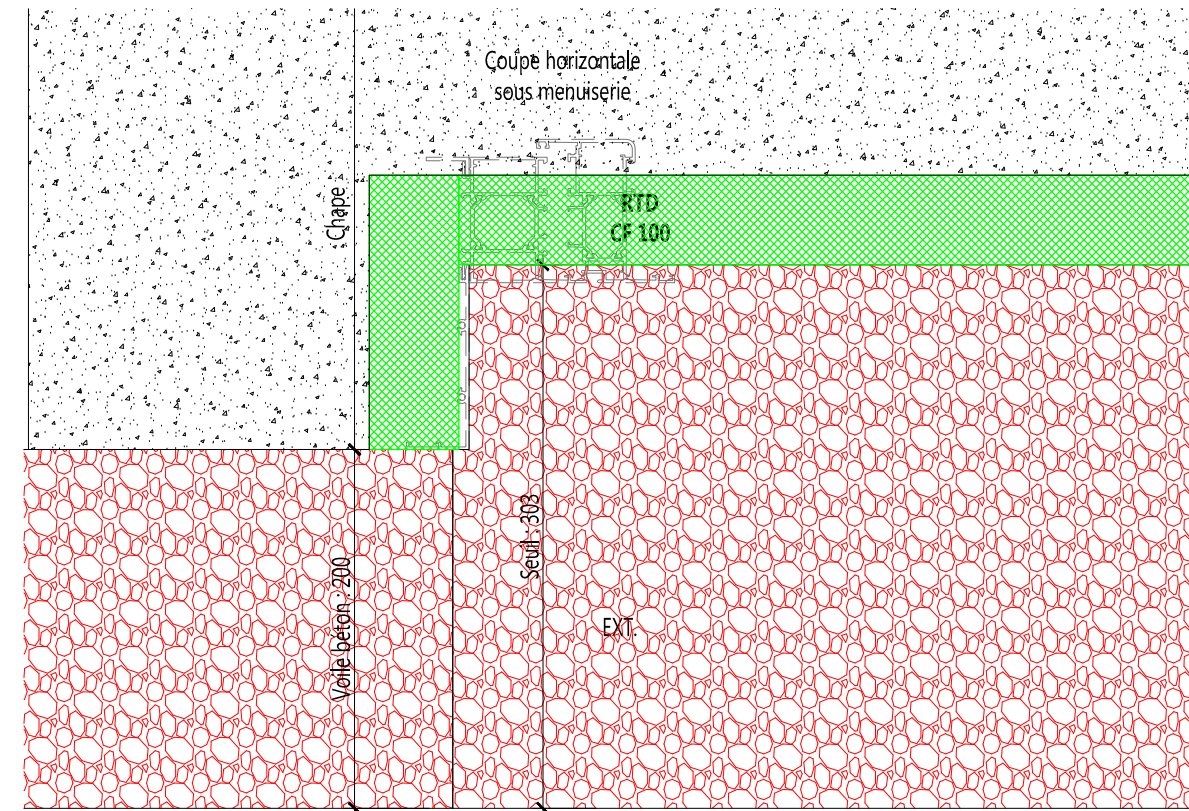
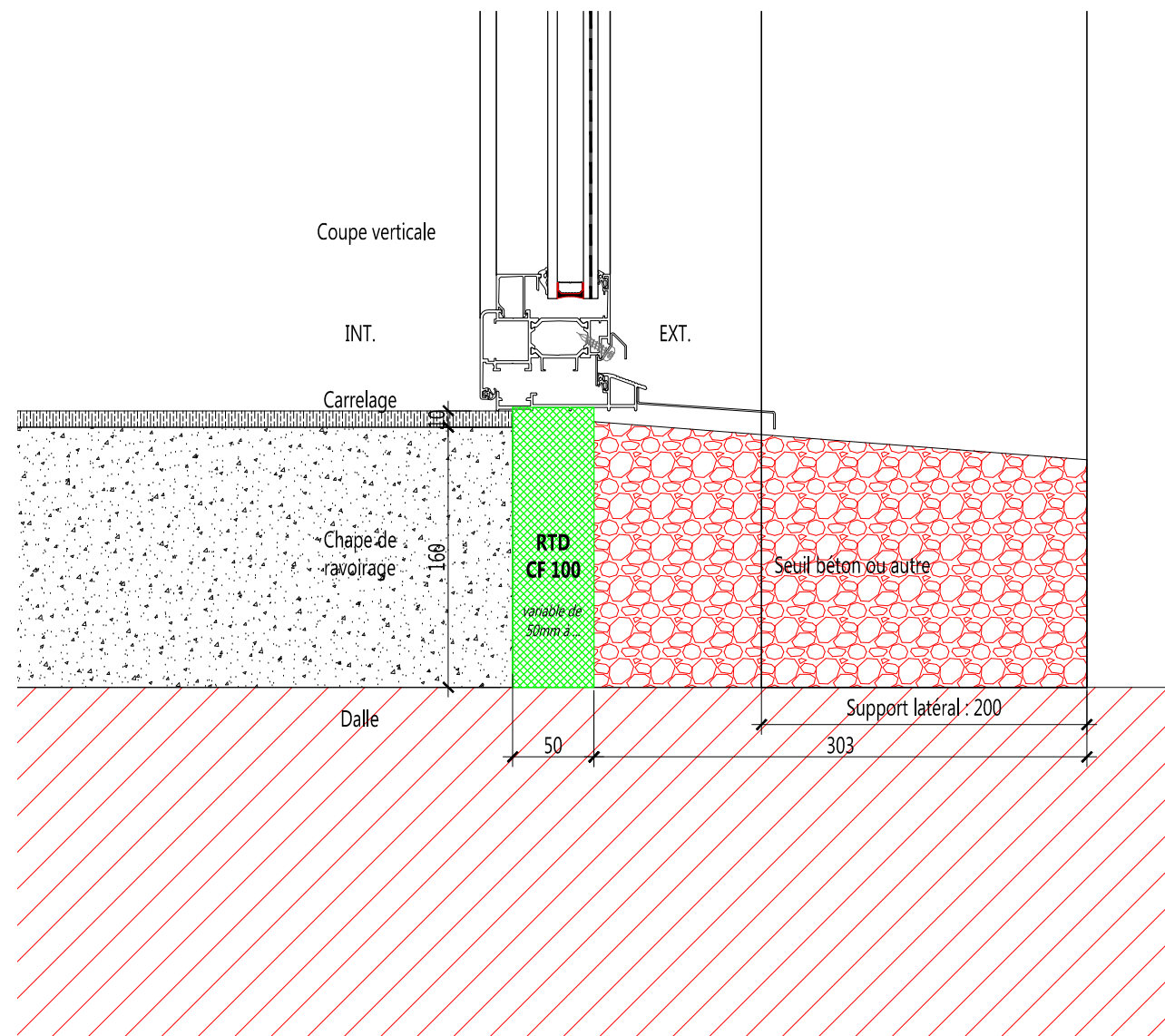
Schéma n°1
Ech : 1/4
Pose en applique intérieur



ARKTIC

Isolant
Résistants
Mécaniques

Schéma n°2
Ech : 1/4
Pose en tunnel



ARKTIC

Isolant
Résistants
Mécaniques

Schéma n°3
Ech : 1/4
Pose en doublage 160mm