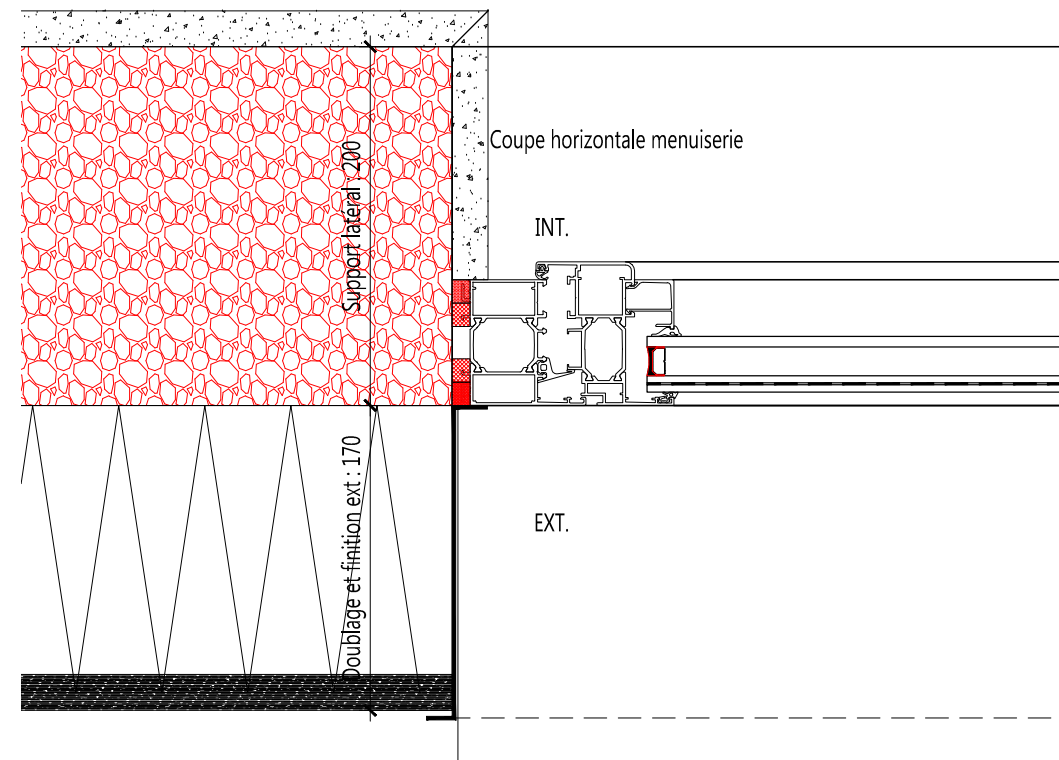
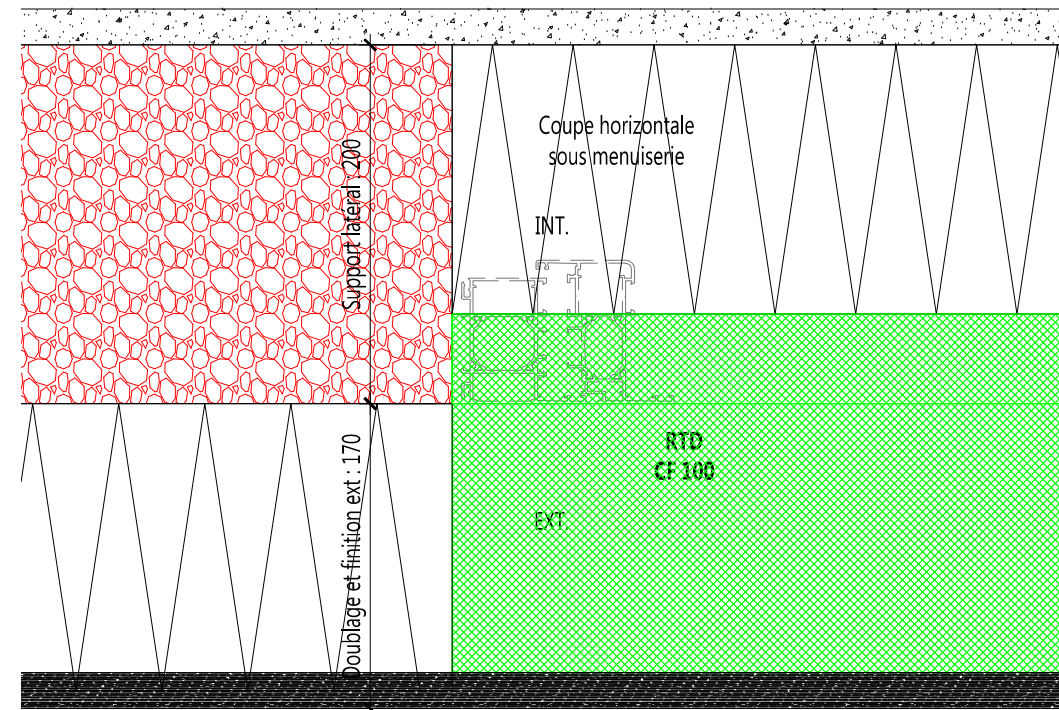
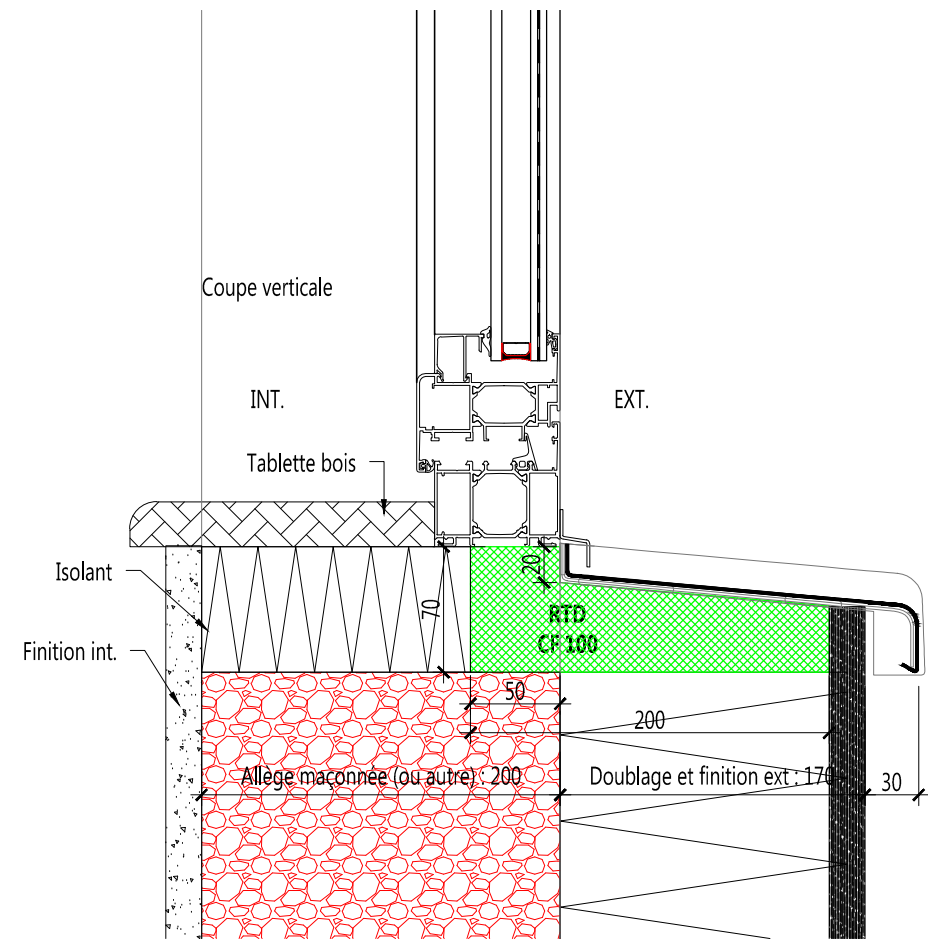


**ARKTIC**

Isolant  
Résistants  
Mécaniques

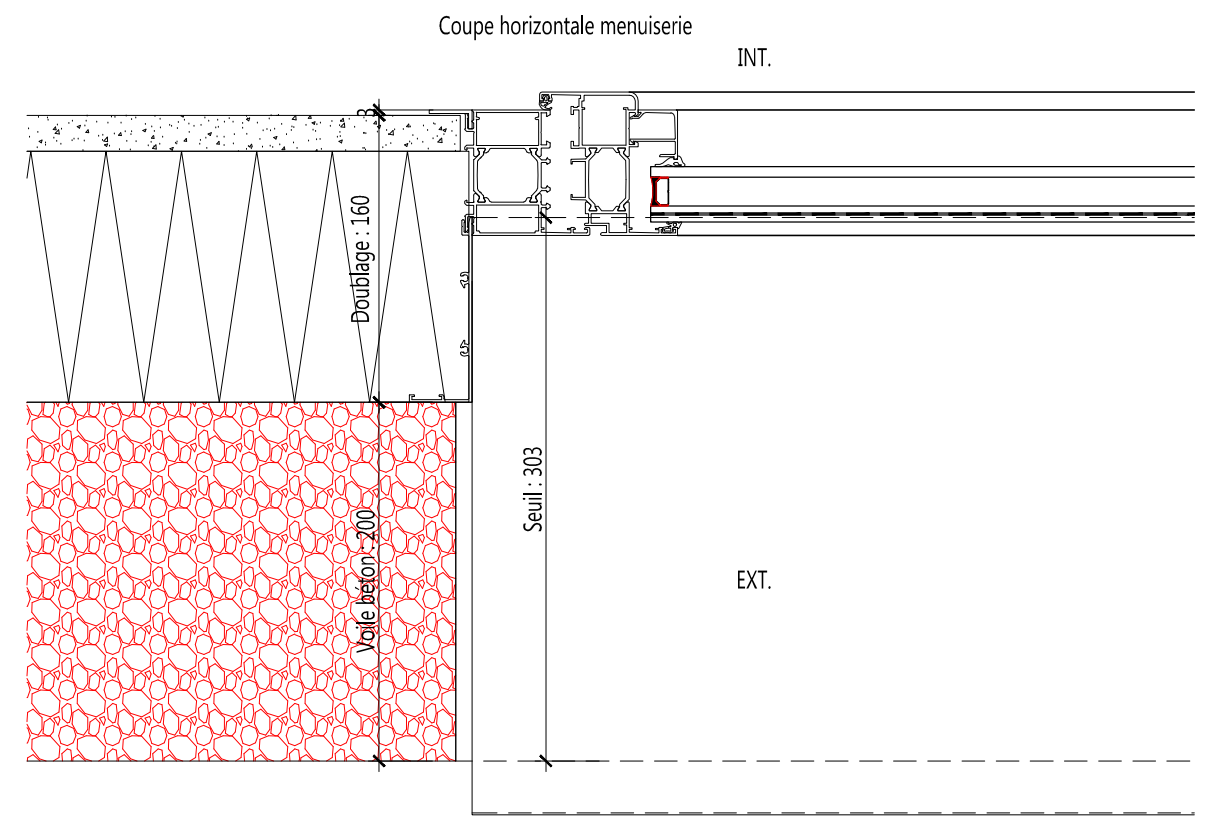
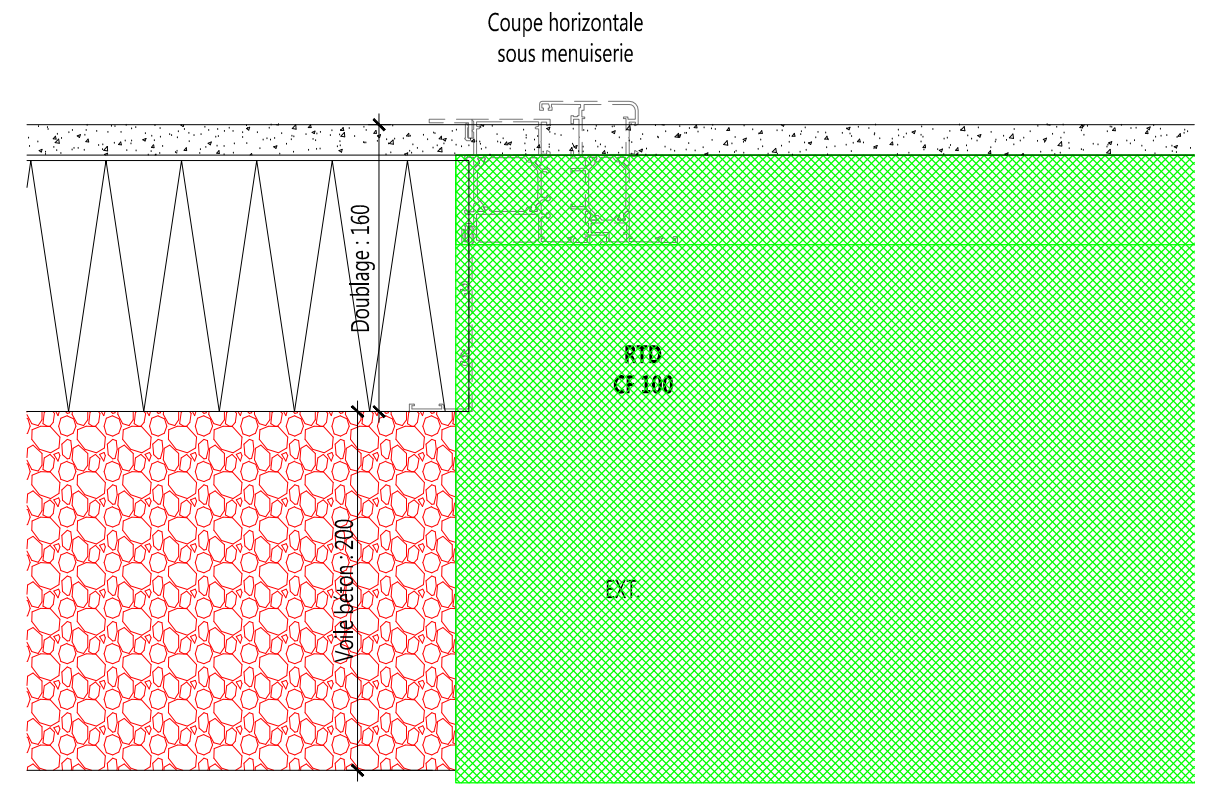
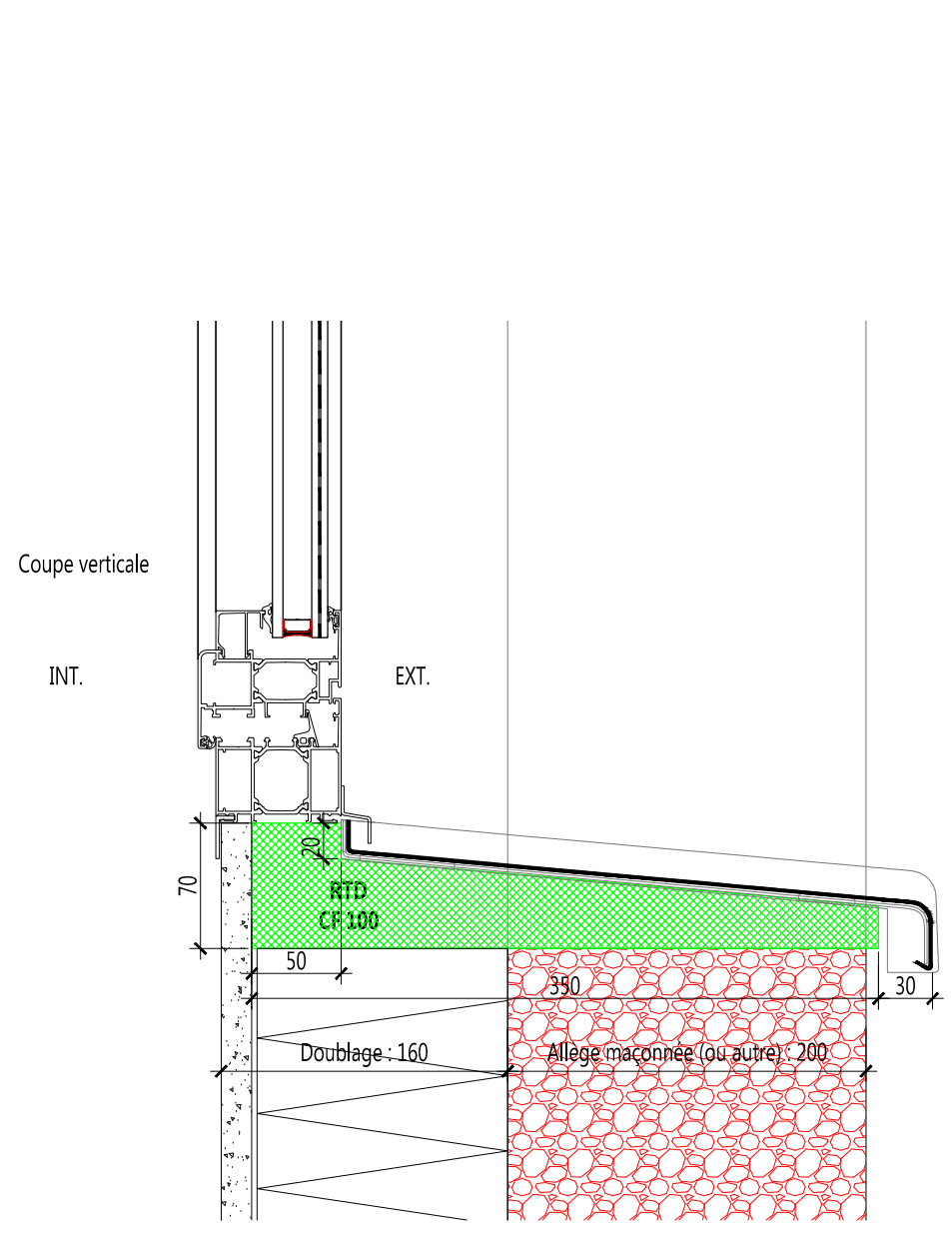
Schéma n°4 (appui de fenêtre)  
Ech : 1/4  
Pose en applique intérieur



**ARKTIC**

Isolant  
Résistants  
Mécaniques

Schéma n°5 (appui de fenêtre)  
Ech : 1/4  
Pose en tunnel



<b>ARKTIC</b>	Isolant	Schéma n°6 (appui de fenêtre)
	Résistants	Ech : 1/4
	Mécaniques	Pose en doublage 160mm